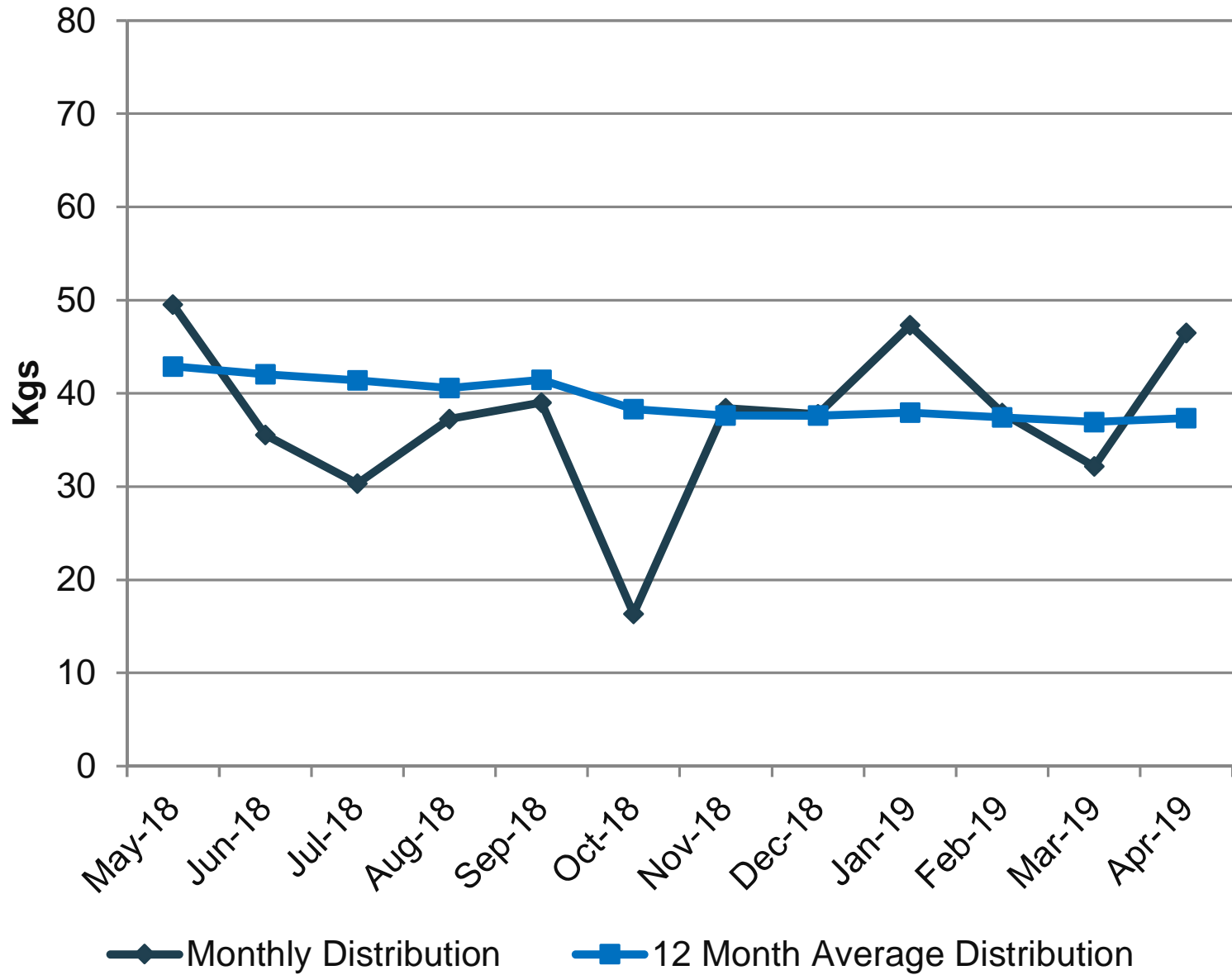


### Sweden - SC/IM IG



**Sweden**  
**2018/2019 Monthly Distribution - SC/IM IG**

<b>SC/IM IG SUPPLY (Kgs)</b>	<b>May-18</b>	<b>Jun-18</b>	<b>Jul-18</b>	<b>Aug-18</b>	<b>Sep-18</b>	<b>Oct-18</b>	<b>Nov-18</b>	<b>Dec-18</b>	<b>Jan-19</b>	<b>Feb-19</b>	<b>Mar-19</b>	<b>Apr-19</b>
Monthly Distribution	49,5	35,6	30,3	37,2	39,0	16,3	38,4	37,8	47,3	37,9	32,2	46,5