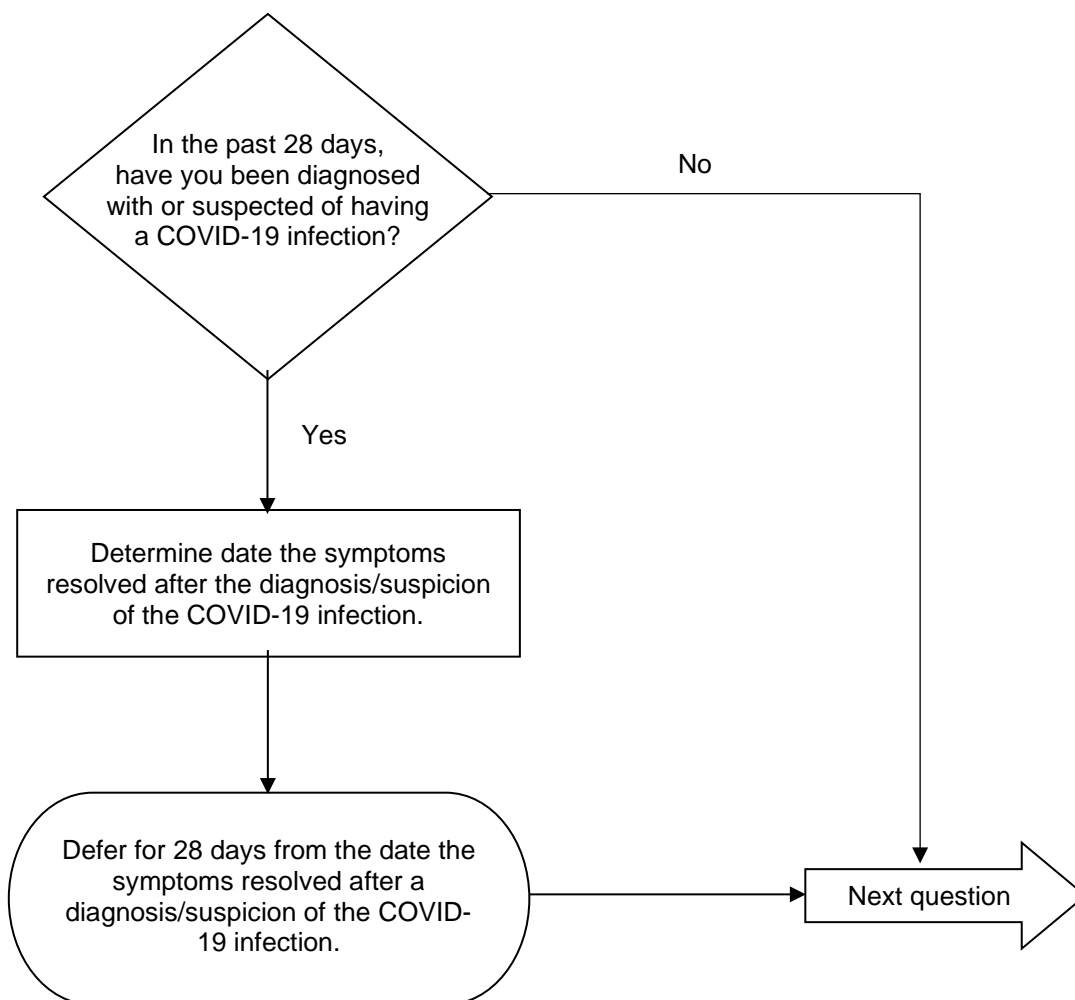


FLOWCHART FOR 2019 NOVEL CORONAVIRUS (COVID-19) – INFECTION OR SUSPECTED INFECTION

Question 1: In the past 28 days, have you been diagnosed with or suspected of having a 2019 novel coronavirus infection (COVID-19)?

Donor Eligibility: A person who has been diagnosed with a COVID-19 infection or has been suspected of having a COVID-19 infection **SHOULD NOT DONATE** for 28 days from the date the symptoms resolved after diagnosis/suspicion of the COVID-19 infection.



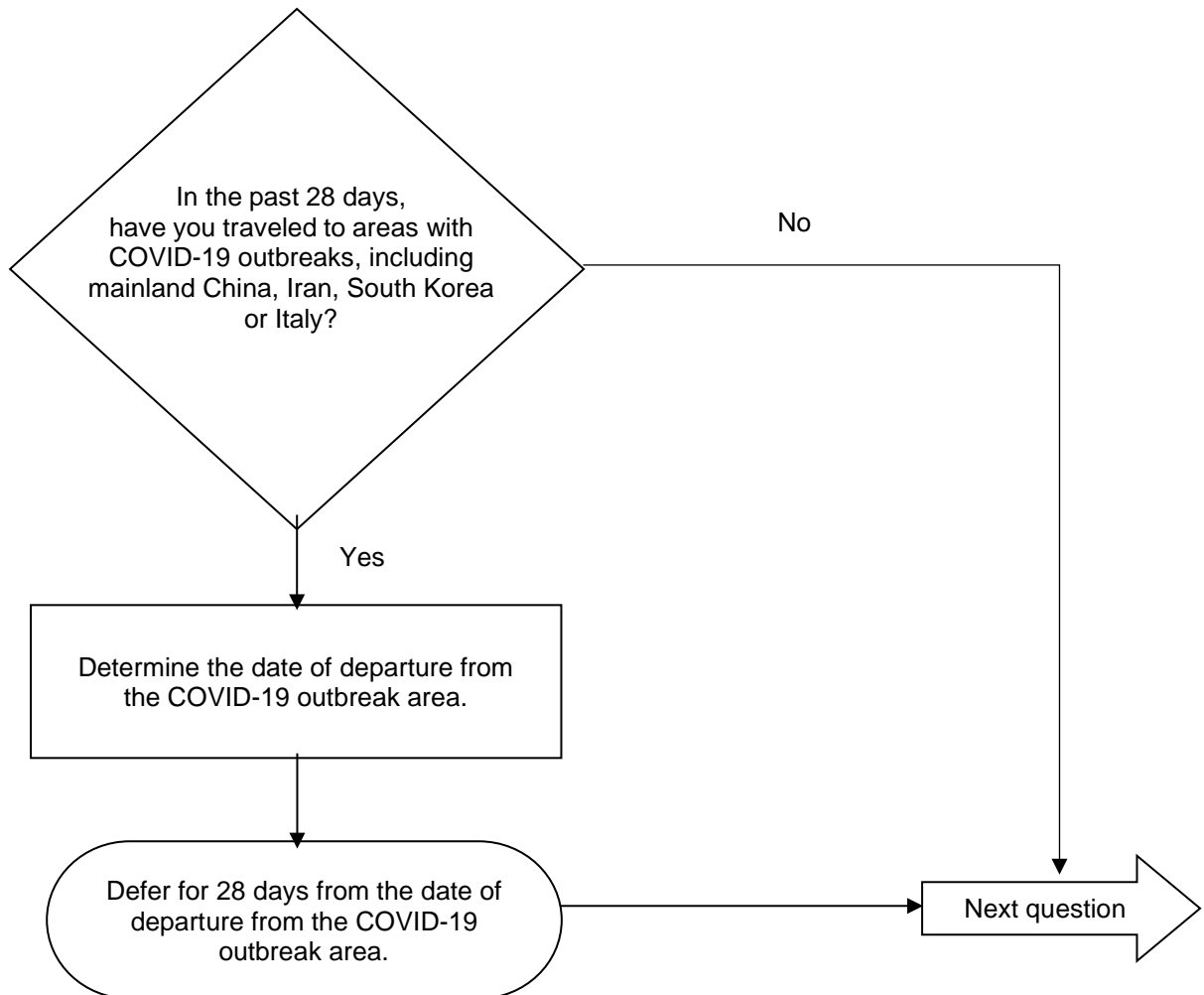
FLOWCHART FOR 2019 NOVEL CORONAVIRUS (COVID-19) – TRAVEL

Question 2: In the past 28 days, have you traveled to areas with 2019 novel coronavirus (COVID-19) outbreaks as listed below?

Per the CDC, the outbreak areas are:

- **People’s Republic of China** (not including Hong Kong, Macau and the island of Taiwan)
- **Iran**
- **South Korea**
- **Italy**

Donor Eligibility: A person who has traveled to areas with COVID-19 outbreaks, as defined by CDC, **SHOULD NOT DONATE** for 28 days from the date of departure from that area.



FLOWCHART FOR 2019 NOVEL CORONAVIRUS (COVID-19) – DIRECT CONTACT

Question 3: In the past 28 days, have you lived with individuals diagnosed with or suspected of having a 2019 novel coronavirus infection?

Donor Eligibility: A person who has lived with individuals diagnosed with or suspected of having a COVID-19 infection **SHOULD NOT DONATE** for 28 days from the last possible close contact exposure to a person with a COVID-19 infection.

